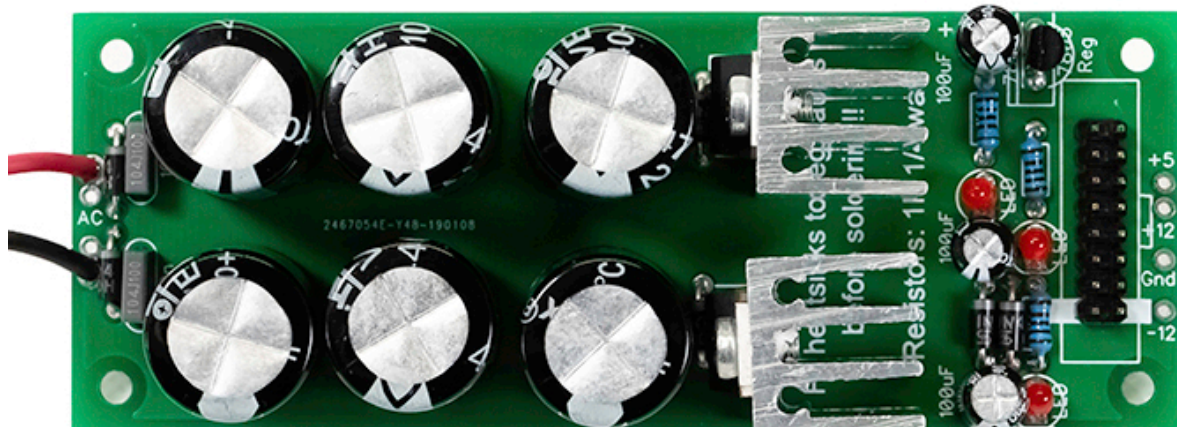
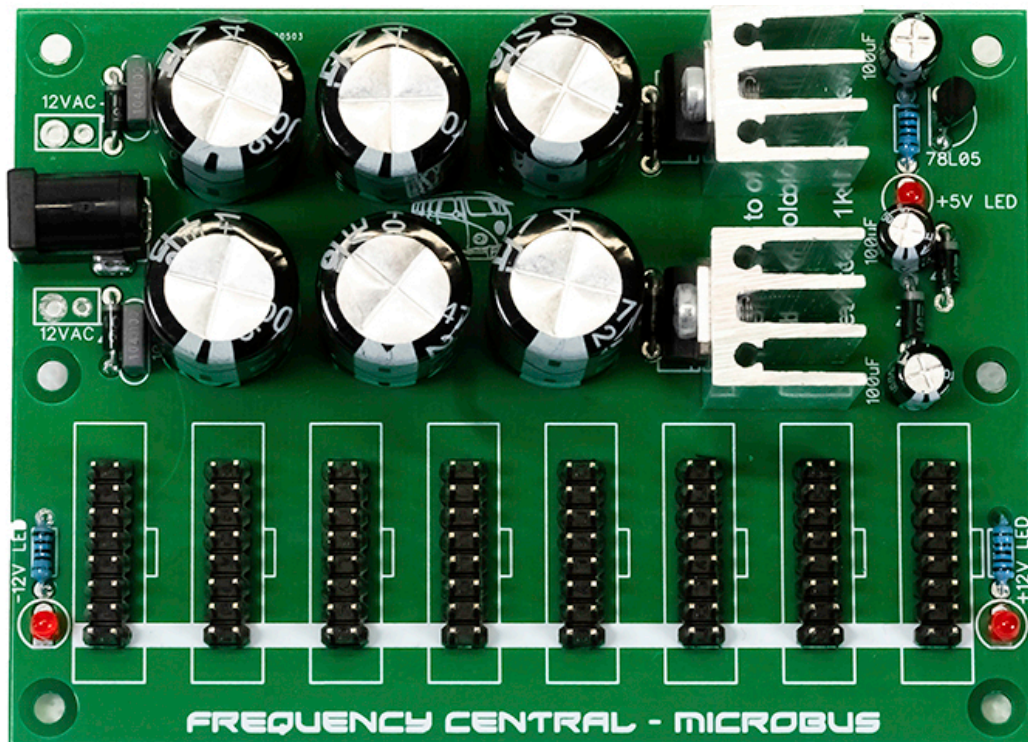


FREQUENCY CENTRAL

Build documentation for:

MICROBUS & FC POWER



This build guide covers both the FC Power and Microbus. The only difference between the two PCB's is the amount of power headers. Microbus also has the option of using a PCB mounted barrel connector instead of a wired connector (see next page for more details)

Build guide - It's best to populate the PCB in height order, smallest first.

1. Solder 6 x 1N4004 diodes and 3 x 1K resistors. Mind polarity of diodes
2. Solder the 3 x 3mm LEDs. Short leg of LED goes into square pad
3. Solder the 100n caps and 78L05. Mind the polarity of 78L05
4. Solder the 16pin power header (FC Power x 1, Microbus x 8)
5. Solder 3 x 100uF Electro capacitors. Mind Polarity - long leg goes to square hole.
6. Bolt the 7812 and 7912 to their heatsinks and solder them into place. Don't mix them up!
7. Solder 6 x 4700uF Electro capacitors. Mind Polarity - long leg goes to + hole.

Power Connector

On the Microbus: If you want to use the PCB mount connector then solder it in place, if you prefer to use the wired connector then follow the guide below

- On the circular barrel connector - attach one wire to each of the outer tabs as shown – leave the middle pin empty.
- Connect the other end of each wire to the larger holes on the PCB. On the FC Power these holes are labelled 'AC', on the Microbus they are labelled '12VAC'
- It doesn't matter which wire goes to which side

